



SoundBeat™ Sport

Wireless Bluetooth® Headset

User Manual

www.hellottec.com

Table of Contents

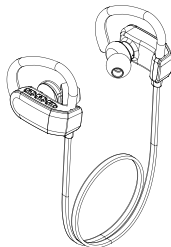
Thank You	4
SoundBeat Sport Wireless Bluetooth® Earphones Overview	5
Charging the Earphones	7
What to Do In Case of Low Battery	7
Getting Started	8
Pairing Earphones with a Compatible Phone	9
Making Calls	9
Restoring to Factory Defaults	11
Operation	14
Troubleshooting	15
Maintenance	17
Warning	22

Thank You

Thank you for purchasing SoundBeat Sport earphones. SoundBeat Sport is equipped with Bluetooth® version V4.2, a technology that improves audio quality, increases the product's operating range and reduces energy consumption.

What's in the box;

- 1 x SoundBeat Sport Wireless Bluetooth® Earphones
- 3 x Earphone Jacks (L, M, S)
- 1 x USB Cable
- 1 x User Manual



SoundBeat Sport Wireless Bluetooth® Earphones Overview

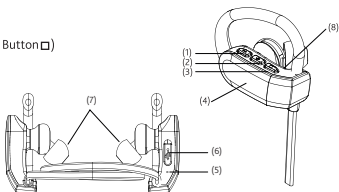
Product Specifications:

Bluetooth® Version	4.2 + EDR
Supported Bluetooth® Profiles	Earphones and hands-free operation
Operating Range	10 meters
Operating Temperature	0 – 50 °C
Charging Time	Approximately 2 – 3 hours
Talk Time*	Up to 6 hours
Standby Time*	Up to 160 hours

* May vary depending on mobile phone settings and mobile network operator.

SoundBeat Sport Wireless Bluetooth® Earphones Overview

- 1) Volume Down (-)
- 2) Volume Up (+)
- 3) MF Button (Multifunction Button □)
- 4) Touch Control
- 5) Microphone
- 6) Micro USB Charging Port
- 7) Speaker
- 8) LED Light



MF Button

Answer Call / End Call / Reject Call / Transfer Call, Play / Pause Music, Voice Call / Redial, On / Off.

Touch Control

Swipe the right touch control forward to skip to the NEXT track. 🎧

Swipe the right touch control backward to skip to the PREVIOUS track. 🎧

Charging the Earphones

In order to fully charge the battery before starting to use the ttec SoundBeat Sport, please connect one end of the charger to a power source and the other end to the Micro USB charging port on the earphones.

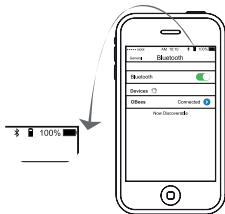
Status	Status Indicator	Volume (Earphones)
1. Charging	Red light ON	No audio
1. Full Battery	Light off	No audio
3. Low Battery	A red light flashes every 5 seconds	A short beep sounds every 20 seconds
4. Empty Battery	OFF	No audio

- If you do not use the device for a long time, please recharge the battery every 6 months in order to prolong battery life.
- If the earphones have not been used for a long time, it will take some time for the charge indicator to appear when you connect the earphones to the charger.

What to Do In Case of Low Battery

You will hear a warning tone in standby mode. In this case please charge SoundBeat Sport.

Battery indication on iPhone or other iOS devices.



Getting Started

Switching the Earphones On and Off:

A. Switching On

Please press the MF button for 4 seconds. The blue LED light will flash and a warning tone will be heard. Your earphones are switched on.

B. Switching Off

Please press the MF button for 3 seconds while the device is on. The red LED light will flash and a warning tone will be heard. Your earphones are switched off.

Pairing Earphones with a Compatible Phone

Pairing your Earphones with Wireless Bluetooth®-enabled Phones:

You need to pair your SoundBeat Sport with your phone before using it.

1. Switch your earphones off and hold the MF button down for approximately 5 seconds until blue and red lights start flashing alternately. SoundBeat Sport is now in pairing mode.
2. Activate the Bluetooth® function on your phone.
3. Search for SoundBeat Sport on your phone and follow the on-screen instructions.
4. If prompted, please enter 0000 as the PIN code and confirm.

Making Calls

Once SoundBeat Sport is successfully connected to your phone, it can be used for making and answering incoming calls. When a connection is established, audio will be transmitted automatically to your earphones.

If supported by your phone, the earphones can be used for voice calls. For more information, please refer to your phone's user manual.

1. Voice Call

Hold MF button down for 2 seconds; the blue indicator light will flash. Then, say the name of the contact you wish to call (This feature can be used if supported by your phone).

2. Redialing

Press the MF button twice in order to redial the last number.

When the earphones are switched on and there is an incoming call to your phone, you will hear a warning tone.

- Press the MF button once to answer the call.
- Press the MF button once to end the call.
- Hold the MF button down for 2 seconds to reject the call

Call Waiting

Press the MF button twice during the call in order to put the active call on hold and answer the other call on hold.

Press the MF button twice to return to the first call.

Call Transfer

Hold the "+" button down for 2 seconds during a call to transfer the call from your earphones to your phone. The blue LED light will flash and a "beep" will be heard. If you wish to transfer the call back to your SoundBeat Sport, hold the "+" button down for 2 seconds.

Earphones Volume Adjustment

You can increase/decrease the volume by using the volume up/down buttons on SoundBeat Sport or your phone.

Press the volume up "+" button to increase volume during the call.

Press the volume down "-" button to decrease volume during the call.

Play / Pause Music

Press the MF button to play or pause music.

Swipe the right touch control forward to skip to the NEXT track. 

Swipe the right touch control backward to skip to the PREVIOUS track. 

Connection to a Computer or Phone

You can connect your SoundBeat Sport to a Bluetooth®-enabled computer or phone. Please follow the steps in "Pairing the earphones with compatible phones" for installation.

Restoring to Factory Defaults

Hold the Volume Up "+" and Volume Down "-" buttons down at the same time for 5 seconds while the earphones are in pairing mode. Restoring to factory defaults is then complete.

Reconnecting your Earphones

1. If the earphones have been switched off, they will reconnect to your phone automatically after they are switched on; if reconnection fails, press the "MF button" once to reconnect manually.
2. If the phone has been switched off and the earphones have been removed from the phone, you will need to press the "MF button" once to reconnect when the phone is switched on again. Otherwise the earphones will switch off.

Function	Button	Volume (Speaker)	Status Indicator
Incoming Call	--	Warning tone	The blue light flashes once every 3 seconds
Answering a Call	Press the MF button once to accept the call	Warning tone	The blue light flashes once every 7 seconds
Answering a Second Call	Press the MF button twice	Warning tone	The blue light flashes once every 7 seconds
Rejecting a Call	Hold the MF button down for 2 seconds	Warning tone	The blue light flashes twice
• You can reject a second call directly from the other connected phone during a call.			
Ending a Call	Press the MF button once	Warning tone	The blue light flashes twice
Voice Call	Hold the MF button down for 2 seconds	Warning tone	--
• Say the voice tag after you hear a short beep. The voice tag should have already been recorded on your mobile phone.			
Last Number Redial	Press the MF button twice	Warning tone	--
Resetting / Clearing Pairing History	Hold the Volume Up "+" and Volume Down "-" buttons down for 5 seconds at the same time while the earphones are in pairing mode.	Warning tone	The blue and red lights flash alternately
Out of Range Warning	--	Warning tone	The blue light flashes once every 5 seconds
• The earphones will automatically reconnect in 10 minutes, otherwise they will switch off. If automatic connection is not supported, press the MF button once.			

Operation (Continued)

Function	Button	Volume (Speaker)	Status Indicator
Call Transfer (from the earphones to the mobile phone or vice versa)	Hold the "+" button down for 2 seconds during the call.	A "Warning" tone is heard once (from the earphones to the mobile phone or vice versa).	The blue light flashes once when a call is transferred from the earphones.
Volume Adjustment	Press the +/- volume buttons once to increase / decrease the volume 1 level during a call (total of 15 levels).	Max. and Min. warning tones will be heard.	--
Standby mode without mobile connection (no network within range)	--	--	The blue light flashes twice every 5 seconds.
Standby mode with mobile connection	--	--	The blue light flashes twice every 5 seconds.

• ttec SoundBeat Sport is designed for mobile phones that have a Bluetooth® Hands-Free profile (or Bluetooth® function); the functioning of some features cannot be guaranteed due to different operating systems used by some phones.

Troubleshooting

I cannot pair with my mobile phone.

- Please make sure your earphones are switched on and fully charged.
- Please make sure your phone's Bluetooth® feature is enabled.
- Please make sure the earphones are in pairing mode (the blue and red lights flash alternately).
- Please make sure your earphones are within your phone's range.

If the above steps do not solve the problem, please switch the earphones off, charge them and try again.

I cannot hear audio from my earphones.

- Please make sure your earphones are switched on and fully charged.
- Please make sure your earphones are paired with and connected to your phone.
- Please make sure the call has not been transferred to your phone.
- Please make sure the volume is sufficiently high.

I cannot switch the earphones off.

Hold the MF button down. If you still cannot switch them off, charge the earphones for 2-3 seconds and disconnect the charger; then the earphones will switch off.

I cannot switch the earphones on.

Please make sure your earphones are switched on and fully charged; otherwise, charge your earphones for 2-3 hours and switch them on again.

My phone fails to reconnect automatically to the earphones.

- Connect the earphones to your mobile phone manually.
- Switch your mobile phone off and on.
- Switch your earphones off and on.

If the above steps do not solve the problem, please switch the earphones off, reset them and pair with your phone again.

I heard a "Beep" from the speaker during a call. What is the reason?

Low battery warning, please charge your earphones.

I heard a noise during a call. What is the reason?

There may be an obstacle between your earphones and mobile phone. Please remove this obstacle or put your phone on a table rather than holding it with your hands.

Maintenance

Your device is a product of advanced design and workmanship, and must be maintained properly. The following recommendations will help you preserve your warranty coverage.

- Please store all accessories and attachments out of children's reach.
- Please keep the device dry. Rain, moisture, and all kinds of liquids contain minerals that may be corrosive to electronic circuits. If your device gets wet please dry it thoroughly.
- Please do not use or store the device in dusty and/or dirty environments. Moving parts and electronic parts may be damaged.
- Please do not store the device in hot environments. High temperatures may shorten the life of electronic devices, damage batteries, and cause certain plastic parts to deform or melt.
- Please do not store the device in cold environments. When the device returns to normal temperature, moisture may build up inside it and the electronic circuits may be damaged.
- Please avoid dropping, impacts and shaking. Rough handling may cause breakage of internal circuits and sensitive mechanical parts.
- Do not use abrasive chemicals, cleaning solvents or strong detergents to clean the device.
- Do not paint the device. Paint may restrict the moving parts and prevent them from functioning properly.

All recommendations above apply to the device, battery, charger and all other accessories. If any device does not function properly, please take it to the nearest authorized service center.

Information on Misuse

- Errors caused by not using the product as specified in the manual,
- Short circuits that occur when the product is used in hot and extremely humid environments,
- Using connection cables other than those supplied by the manufacturer in the product packaging,
- User intervention or adding/removing parts,
- External physical impact on the product and damage such as breaking the product,
- Damaging or removing the product serial number,
- Failure caused by not using the original accessories,
- Damage caused by natural disasters such as fire, lightning, floods and earthquakes

Transportation Considerations

Please remove the product carefully from the packaging and store all the accessories in the box in order to avoid losing them. Please check the product for transportation damage. If your product is damaged and not operating, please notify your point of purchase immediately.

If your product has been shipped directly to you, please notify the shipper immediately. Only the buyer (the customer or company that purchased the device) may claim transportation damages.

Important Safety Instructions

- Please read all safety precautions and usage instructions before operating the product.
- Please use the product as instructed in the user manual.
- Please do not use the product near water sources.
- Please keep the product away from heat sources.
- Please keep the product away from humid environments. Please protect the product against rough handling and moisture.
- Please do not insert any objects or spill liquids inside the product.
- Please do not expose the product to water and moisture. Failure to do so may result in electric shock.
- Please do not use excessive force to pull the cable as it may cause damage.
- Please keep the product away from direct sunlight
- Please do not place the product on another object or an unsecured table. Otherwise, the product may fall and be damaged.
- Please disconnect the product from the PC before cleaning it. Please do not use liquid cleaning agents. Use a damp cloth for cleaning.

Guidelines for Use

- Before starting to use the product please read the "INTRODUCTION and USER MANUAL" carefully.
- Please keep your product away from heat sources.
- Please pay attention to keep your product away from spillage and liquid exposure.
- Please do not expose your product to water and moisture. Failure to do so may result in electric shock.
- Please use your product as instructed in the user manual.
- Please do not expose your product to dust.
- Please unplug your product and its accessories when they are not in use.

Transportation Considerations

Please do not expose the product to any impacts during transport.

Health, Safety and Environmental Considerations

Please keep your product away from heat sources such as radiators and ovens. Please dispose of your electronic product in recycle bins instead of domestic waste bins due to the negative effects of harmful components on human health and environment.

Information on Maintenance, Repair and Product Cleaning that can be Carried out by User

There are no user-serviceable parts inside. In case of faults please contact an authorized service station (Please see the list of authorized service stations) or the authorized seller from which you bought the product.

Periodic Maintenance

After the warranty period, technical maintenance should only be performed by authorized service stations.

Connection and Installation

Connection and installation should be performed by the user as instructed in the user manual. In the case of any problems during connection and assembly please contact an authorized service station (please see the list of authorized service stations).

Lifetime

The "LIFETIME" of the device is 3 years in terms of spare parts supply and proper functioning.

WARNING

Permanent hearing loss may be experienced due to prolonged exposure to high volume. Please use your device at a low volume as much as possible and avoid using your earphones at excessive sound pressure levels for prolonged periods of time. Please read the following safety guidelines before using your earphones.

Please follow these steps before using this product:

1. Adjust the volume to the lowest level before putting on the earphones.
2. Put on your earphones and slowly increase the volume to a comfortable level.

While using this product;

1. Keep the volume as low as possible.
 2. If it is necessary to increase the volume, please do so slowly.
 3. If you experience discomfort or hear ringing in your ears, please stop using the earphones.
- As a result of using the earphones at high volume continuously, your ears may get used to this volume, leading to permanent hearing damage without you feeling any discomfort.

IMPORTANT



- Please fully charge SoundBeat Sport before the first use.
- When not in use for more than 6 months, you need to recharge the SoundBeat Sport.
- You should use the specified charger to charge the SoundBeat Sport.

INFORMATION ON MAINTENANCE, REPAIR or CLEANING

The product does not require any maintenance as long as the instructions in the user's manual are followed.

The ECONOMIC LIFE needed for your device to fulfill its functions is 3 years in terms of spare parts supply.

Note: Our company is not responsible for any typographical errors.

*** This product has been marked in accordance with the  and  norms.

*** This product is RoHS compliant.



RoHS Statement

All lead-free products of our company comply with the Restriction of the Use of Certain Hazardous Substances (RoHS) European directive. This means that our production processes and products are strictly "lead-free" and do not contain hazardous substances as defined in the directive.



Correct Disposal Of This Product

(Waste electrical and electronic devices) (For countries that have separate collection systems)

This symbol found on the product, its accessories or relevant documents indicates that the product and its electronic accessories (e.g. charging device, earphones, USB cable) should not be disposed of along with other domestic wastes. In order to prevent the harmful effect of uncontrolled disposal of wastes on the environment and human health, please separate it from other types of waste and ensure the recycling of material sources for their sustainable reuse. Domestic users should contact their Dealer or the local authority for detailed information on where to take this product and how to do it for an environmentally safe recycling. Industrial users should contact their supplier and check the provisions and conditions of the purchasing agreement. This product and its electronic accessories should not be mixed with the wastes to be destroyed or commercial wastes.



Correct Disposal Of the Battery

(For countries that have separate collection systems)

If you intend to dispose of the product, necessary precautions should be taken for reprocessing and repair of the product, including its battery, at the waste collection area.

The economic life of this product is 3 years.

The crossed-out wheeled bin symbol symbolizes that the product must be collected separately at the end of its economic life within the European Union. This applies to your product that bears this symbol and its accessories. Do not dispose of these products as unclassified urban waste.





with ♥ from htec