



SoundBeat™ Pro

Wireless Bluetooth® Headset

User Manual

www.hellottec.com

Table of Contents

Thanks	4
Overview of SoundBeat Pro Bluetooth® Stereo Earphones	5
How to Charge the Earphones	7
What to do When the Battery is Low	7
Getting Started	8
Pairing the Earphones with a Bluetooth®-enabled Mobile Phone	9
Calling	9
Factory Reset	11
Using the Earphones	13
Troubleshooting	15
Maintenance	17

Thanks

Thanks for having bought our SoundBeat Pro earphones. SoundBeat Pro features Bluetooth® version V4.1, which is a technology that enhances the sound quality, increases the product range and also ensures less energy consumption.

Contents of the Package:

- 1 x SoundBeat Pro Bluetooth® Stereo Earphones
- 1 x USB Cable
- 3 X Ear Tips (L, M, S)
- 2 x Ear Hooks (M, S)



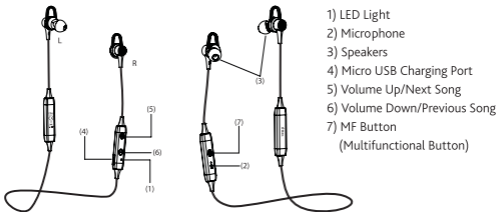
Overview of SoundBeat Pro Bluetooth® Stereo Earphones

Product Specifications:

Bluetooth® Version	4.1
Bluetooth® Profiles Supported	Earphones and hands free
Operating Range	10 meters
Operating Temperature	0 - 50°C
Charging Time	Approximately 1,5 – 2 hours
Talk Time*	Up to 5 hours
Standby Time*	Up to 50 hours

* Varies by the mobile phone settings and the operator.

Overview of SoundBeat Pro Bluetooth® Stereo Earphones



Multifunctional Button:

Answer a call / End a call / Reject a call / Transfer a call; Play / Pause music; Voice Dialing; Redial

How to Charge the Earphones

Before starting to use ttec SoundBeat Pro, please connect the charger to a power source and the other end to the micro USB charging port on the headphones to fully charge the battery.

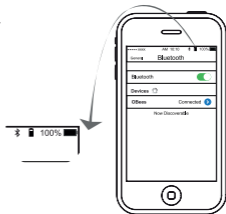
Status	Status Indicator	Sound (Earphones)
1. Charging	Red light is ON	No sound
2. Battery Full	Light is OFF	No sound
3. Low Battery	Red light is on every 5 seconds	A short bleep every 20 seconds
4. Empty Battery	OFF	No sound

- When the device is not used for a long time, recharge it every 6 months to extend the Battery life.
- If the earphones have not been used for a long time, the charge indicator will be on after the earphones are connected to the charger.

What to do When the Battery is Low

You will hear a beep sound in standby mode. In that case, please charge SoundBeat Pro.

Battery indication on iPhone or other iOS devices.



Getting Started

Switching the Earphones On and Off:

A. Switching On

Please press the MF button for 4 seconds. The blue LED light will flash and a warning tone will be heard. Your earphones are switched on.

B. Switching Off

Please press the MF button for 3 seconds while the device is on. The red LED light will flash and a warning tone will be heard. Your earphones are switched off.

Pairing the Earphones with a Bluetooth®-enabled Mobile Phone

Pairing your Earphones with a Bluetooth®-enabled Mobile Phone:

Before using SoundBeat Pro, you must pair it with your mobile phone.

1. First, turn off your headset. Then, long press the MF button for about 5 seconds until the blue and red lights start blinking alternately. SoundBeat Pro is now in pairing mode.
2. Enable the Bluetooth® on your mobile phone.
2. Search for SoundBeat Pro on your phone, and follow the instructions on your mobile phone.
3. If a PIN code is required, enter 0000 and confirm.

Calling

After SoundBeat Pro is successfully paired with your mobile phone, it can be used to make and answer calls. When connected, the sound will be automatically transferred to your earphones.

If your mobile phone supports it, the headphones can be used for voice dialing.

For further information, please check the user's manual of your mobile phone.

1. Voice Dialing

Keep the button pressed for 2 seconds; a message will be heard and the indicator light will blink in blue color. After that, say the name of the person you want to call (this feature can be used if your phone supports it).

2. Redialing

Press the MF button for double click if you want to redial the last number dialed.

Answering / Ending / Rejecting A Call

After the earphones are on and a call is received on your phone, you will hear the beep sound.

- Click once the MF button to answer the call.
- Click once the MF button to end the call.
- Press the MF button for 2 seconds to reject the call.

Placing Calls On Hold

To place a current call on hold and answer the call on hold, double click the button during the call.

Double click the button to switch back to the first call.

Call Transfer

In order to transfer the call from your earphones to the mobile phone during a call, press the Volume Up "+" button for 2 seconds . The blue LED light will blink and a beep sound will be heard. When you want to retransfer the call to SoundBeat Pro, press the Volume Up "+" button for 2 seconds .

Adjusting the Volume Of the Earphones

You can increase/decrease the volume via Volume Up / Volume Down button of SoundBeat Pro or your mobile phone.

In order to increase the volume, click the Volume Up "+" button during the call.

In order to decrease the volume, click the Volume Down "-" button during the call.

Playing / Pausing Music

Press the MF button to play music or pause the music playing.

Press long the Volume Up "+" button to play the next track.

Press long the Volume Down "-" button to play the previous track.

Pairing With A Computer or A Mobile Phone

You can pair your SoundBeat Pro with a Bluetooth®-enabled computer or a PDA.

For installation, please follow the steps of "Pairing the earphones with a Bluetooth®-enabled mobile phone".

Factory Reset

When the device is on, keep the MF and Volume Down "-" buttons pressed at the same time for 10 seconds. The device will be successfully returned to factory settings when the blue and red lights start blinking alternately.

Reconnecting Your Earphones

1. If the earphones are off, it will automatically reconnect to your phone when it is turned on. If not, press the Smart button once to reconnect it manually.
2. If the phone is turned off and the earphones have been disconnected from the phone, you need to press the Smart button once to reconnect it to your phone when it is turned on again. Otherwise, the earphones will be turned off.

Using the Earphones

Function	Button	Sound (Speakers)	Status Indicator
Incoming Call	--	Beep	The blue light blinks once every 3 seconds.
Answering a Call	Press once the Smart button to accept the call	Beep	The blue light blinks once every 7 seconds.
Answering a Second Call	Double click the MF button	Beep	The blue light blinks once every 7 seconds.
Rejecting a Call	Press the MF Button for 2 seconds	Beep	Blinks twice
• You can directly reject a second call from another phone connected during the call.			
Ending a Call	Press once the Smart button	Beep	Blinks twice
Voice Call	Press the MF Button for 2 seconds	Beep	--
• Say the voice label after hearing a short beep. Your mobile phone needs to have a voice label registration.			
Redialing the Number Last Dialed	Double Click the MF Button	Beep	--
Resetting/Deleting the Pairing History	Keep the MF and Volume Down "+,-" buttons pressed for 10 seconds	Beep	The blue and red lights blink alternately
Out of Range Warning	--	Beep	The blue light blinks once for 5 seconds
• The earphones will automatically reconnect within 10 minutes; otherwise, it will turn off. If automatic connection is not supported, press the Smart button once.			

Using the Earphones (Continued)

Function	Button	Sound (Speakers)	Status Indicator
Call Transfer (from earphones to mobile phone and vice versa)	Keep the Volume Up "+" button pressed for 2 seconds during call	"Beep" tone once (from earphones to mobile phone and vice versa)	When a call is transferred from the headset, the blue light will blink once.
Volume Adjustment	Press +/- buttons once to increase / decrease the volume by one level during call (8 levels in total)	Beep for maximum and minimum levels	
--	--	--	The blue light blinks twice for 5 seconds
On-hold mode without mobile connection (no network within the range)		--	The blue light blinks twice for 5 seconds

• ttec SoundBeat Pro has been designed for mobile phones that support Bluetooth® Hands Free profile (or Bluetooth® device); there is no guarantee that certain features will be supported since some telephones have different operating systems.

Troubleshooting

I Cannot Pair My Earphones With My Mobile Phone

- Make sure your earphones are on and fully charged.
- Make sure the Bluetooth® is enabled on your mobile phone.
- Make sure your earphones are in pairing mode (the light will blink in blue and red alternately).
- Make sure your earphones are not out of the range of your phone.

If the above steps do not solve your problem, please turn off the earphones, recharge them and try again.

I Cannot Hear A Sound From My Earphones

- Make sure your earphones are on and fully charged.
- Make sure your earphones are paired with and connected to your phone.
- Make sure that the call is not transferred to your phone.
- Make sure that the volume is high enough.

I Cannot Turn Off the Earphones

Press long the Smart button; if this does not work, charge the earphones for 2-3 minutes, and then disconnect the charger. After that, the earphones will turn off.

I cannot Turn On the Earphones

Make sure your earphones are on and fully charged. Otherwise, charge your earphones for 1-1.5 hours and turn it on again.

My Phone Does Not Automatically Connect to the Earphones

- Pair your earphones manually with your mobile phone.
- Turn off and then restart your mobile phone.
- Turn off and then restart your earphones.

If none of the steps above has worked, turn off and reset the earphones, and then pair them again with your phone.

I Heard a "Beep" Sound From the Speaker During A Call, What Could Have Happened?

It is a low battery warning. Please charge your earphones.

I Heard A Noise During A Call, What Could Be the Reason Of It?

There may be a barrier between your earphones and your mobile phone; please remove such barrier or put your phone on a desk and do not hold it in your hand.

Maintenance

Your device is a product of superior design and workmanship, and it should be maintained carefully. The following recommendations will help you continue the warranty.

- Keep all the accessories and additional parts out of reach of children.
- Make sure that the device stays dry. Rain, humidity and all kinds of liquids contain minerals that may corrode the electronic circuits. If your device gets wet, dry it out.
- Do not use and keep the device in dusty and dirty environments. Otherwise, the moving parts and electronic components may become damaged.
- Do not keep the device in hot areas. High temperatures may decrease the economic life of electronic devices, damage their batteries and cause deformation or melting of certain plastic parts.
- Do not store your device in cold areas. When the device returns to its normal temperature, humidity can form within the device, which may damage the electronic circuits.
- Do not drop or shake your device or expose it to impact. Rough use may result in breaking of the internal circuits and sensitive mechanical parts.
- Do not use harsh chemicals, cleaning solvents or strong cleaning agents to clean your device.
- Do not paint your device. Paints may restrict the movements of moving parts and prevent them from working properly.

All of the recommendations above apply to the device, batteries, charging device or all the other accessories. If any device is not working properly, take your device to the nearest authorized service.

Information On Misuse

- Errors arising from failure to use the product as indicated in the manual,
- Short-circuiting of the product when it is operated in hot and extremely humid environments,
- Using connection cables other than those that have been provided in the product's package by the manufacturing company,
- Interventions by the user or inserting or removing parts,
- Exterior damages to products such as physical impacts and breaks,
- Destroying or removing the serial number of the product,
- Malfunctions arising from not using the original consumable materials,
- Damages resulting from natural disasters such as fire, lightning, flood, earthquake.

Points to Consider When Handling

Remove the product carefully from its box, and keep all the accessories within the box in order not to lose them. Check the product against any possible damages during transportation. If your product is damaged and not working, immediately notify the supplier. If your product was directly sent to you, promptly inform the sender company. Only the buyer (the customer or company that bought the product) may claim transportation-related damages.

Important Safety Instructions

- Before using the product, make sure to read all the safety warnings and usage instructions.
- Use the product as indicated in the user's manual.
- Do not use the product in places close to water.
- Keep the product away from heat sources.
- Keep the product away from humid environments. Protect it against rough use and humidity.
- Do not insert any objects in the product or pour liquid on it.
- Never expose the product to water and humidity. Otherwise, it may cause electric shock risks.
- Do not cause damages to the cable by pulling it by applying extreme force.
- Keep it away from places receiving direct sunlight and do not expose it to direct sunlight.
- Before using the product, make sure to read all the safety warnings and usage instructions.
- Use the product as indicated in the user's manual.
- Do not use the product in places close to water.
- Keep the product away from heat sources.
- Keep the product away from humid environments. Protect it against rough use and humidity.
- Do not insert any objects in the product or pour liquid on it.

- Never expose the product to water and humidity. Otherwise, it may cause electric shock risks.
- Do not cause damages to the cable by pulling it by applying extreme force.
- Keep it away from places receiving direct sunlight and do not expose it to direct sunlight.
- Do not place your product on another object or an unstable desk. Otherwise, the product may fall and be damaged.
- The product must be disconnected from the PC before it is cleaned. Do not use liquid cleaning agents. Use damp cloth for cleaning.

Rules to Follow During Use

- Please read the "INTRODUCTION and USER'S MANUAL" carefully before using the product.
- Keep your product away from heat sources.
- Make sure that no liquid is spilled on your product or it is not in contact with liquids.
- Never expose the product to water and humidity. Otherwise, it may cause electric shock risks.
- Use your product as indicated in the user's manual.
- Do not expose your product to dust.
- When your product and its accessories are not in use, remove the plug from the socket.

Points to Consider When Handling

Do not expose your product to any impact when handling.

Warnings About Human and Environmental Health

Keep your product away from heat sources such as radiators and ovens. Due to the adverse effects of its components that are harmful to human and environmental health, your electronic product should not be thrown in waste bins but recycling bins.

Information on the Maintenance, Repair and Cleaning that the Consumer Can Perform

Your product does not contain any maintainable parts; in case of a malfunction, refer to the authorized service stations (See the list showing the authorized service stations) or the authorized dealer from whom you have bought your product.

Periodical Maintenance

Post-warranty technical maintenance can only be performed in authorized service stations.

Connection and Assembly

The connection and assembly are performed by the consumer as shown in the user's manual. Please contact the authorized service station in case of any connection and assembly related problems (See the list showing the authorized service stations).

WARNING

Long-term exposure to high volumes may result in permanent hearing loss. Use the product at lower volumes as much as possible and avoid long-term use of earphones at extreme volumes. Please read the following guiding rules for safety before using the earphones.

(Please follow these steps before using the product)

1. Please adjust the volume to lowest before putting on the earphones.
2. Put the earphones on and adjust the volume slowly to a comfortable level.

(When using this product)

1. Keep the volume as low as possible.
2. If you need to increase the volume, adjust the volume slowly.
3. If you are experiencing any discomfort or ringing in your ears, please stop using the earphones. Your ears may get used to high volumes as a result of always using the earphones at high volumes, which may permanently damage your hearing without feeling any discomfort.

IMPORTANT



- Please fully charge SoundBeat Pro prior to first use.
- You need to recharge SoundBeat Pro if it has not been used for longer than 6 months.
- You should use an approved charger to charge the SoundBeat Pro.

INFORMATION ON MAINTENANCE, REPAIR or CLEANING

The product does not require any maintenance as long as the instructions in the user's manual are followed.

The ECONOMIC LIFE needed for your device to fulfill its functions is 3 years in terms of spare parts supply.

Note: Our company is not responsible for any typographical errors.

*** This product has been marked in accordance with the  and  norms.

*** This product is RoHS compliant.



RoHS Statement

All lead-free products of our company comply with the Restriction of the Use of Certain Hazardous Substances (RoHS) European directive. This means that our production processes and products are strictly "lead-free" and do not contain hazardous substances as defined in the directive.



Correct Disposal Of This Product

(Waste electrical and electronic devices) (For countries that have separate collection systems)

This symbol found on the product, its accessories or relevant documents indicates that the product and its electronic accessories (e.g. charging device, earphones, USB cable) should not be disposed of along with other domestic wastes. In order to prevent the harmful effect of uncontrolled disposal of wastes on the environment and human health, please separate it from other types of waste and ensure the recycling of material sources for their sustainable reuse. Domestic users should contact their Dealer or the local authority for detailed information on where to take this product and how to do it for an environmentally safe recycling. Industrial users should contact their supplier and check the provisions and conditions of the purchasing agreement. This product and its electronic accessories should not be mixed with the wastes to be destroyed or commercial wastes.



Correct Disposal Of the Battery

(For countries that have separate collection systems)

If you intend to dispose of the product, necessary precautions should be taken for reprocessing and repair of the product, including its battery, at the waste collection area.

The economic life of this product is 3 years.

The crossed-out wheeled bin symbol symbolizes that the product must be collected separately at the end of its economic life within the European Union. This applies to your product that bears this symbol and its accessories. Do not dispose of these products as unclassified urban waste.





with ♥ from ttec